

The Chart

Vol. XXX

Missouri Southern College, Joplin, Missouri, April 4, 1969

No. 14

College Board, Trustees Award Dormitory Construction Bid

A Tulsa, Oklahoma construction firm has been named low bidder for construction of Missouri Southern College's first two dormitories on campus.

The Tulsa Rig and Reel Company, with a base bid of \$1,254,300, was low bidder over three other builders in bidding Friday afternoon, March 14, at the College.

MSC's college board and regents-trustees accepted the low base bid and an alternate of the firm for a net bid of \$1,240,500.

However, the contract is subject to approval of the U.S. Department of Housing

and Urban Development which is providing a \$1,348,000 loan to finance the project. Approval is pending from the HUD office in Fort Worth, Texas.

M-P Construction Company, Carthage, successful contractor for all previous structures on the campus, was second in the bidding. The Carthage firm's base bid was \$1,313,000, or \$58,700 more than the Tulsa firm's.

Other base bids were The Jones Brothers Construction Company, Joplin, \$1,325,340 and R. L. Henry Construction Company, Grandview, Mo., \$1,345,000.

A total of \$13,800 was sliced off the initial bid. The College board accepted one of six alternates, which eliminates carpeting in the dormitory corridors.

Total costs of the project probably will run more than the federal loan, according to Dr. Leon Billingsly, College president. But the president said additional funds needed will come from the College budget.

The low bidder proposed 330 days for completion.

No date to begin construction has been announced due to necessity of federal review of the bids and proposed contracts. The two dormitories probably will be occupied in early 1970, the president said.

Months of delays in getting the federal loan assured are blamed for the late start in on-campus housing for MSC.

The dormitories will be located on the north side of Newman road, across from the main campus. The men's dormitory, a three-story structure, will house 212, while the two-story women's dormitory will house 112 single women.

Student Union To Open Soon

Work is rapidly progressing on the new \$640,000 Student Union building and the opening date is still set around April 15, according to Dr. Leon Billingsly, College president.

Dr. Billingsly added that the third-floor ballroom will be available for the annual Crossroads Ball, scheduled Saturday night, May 3. The Classmen, a band from Kansas City, will provide the music for the event.

Snack bar and lounge facilities will be installed as soon as the interior of the Union is finished, the president said. The present cafeteria site will remain open for the remainder of the year, however.

Upon completion, the first and third floors can be used by students. The second floor will be used for storage until the close of the year.

On the question of a director for the student union, Dr. Billingsly stated that a full-time director will not be named in the near future, but added that one would be needed eventually. The director would be responsible for coordinating union facilities for dances, meetings and other activities.



Kathy Wright is inducted into Phi Theta Kappa, the College's scholastic fraternity, by the organization's secretary Susan Conrow.

Phi Theta Kappa Inducts Thirty-one New Members

Thirty-one students were inducted into the Eta Chi chapter of Phi Theta Kappa in ceremonies, March 16.

Inducted into the honor fraternity were Gary Armstrong, Susan Babb, Ruth Bates, Barbara Broglio, Ann Buehner, Margaret Campbell, Jeannie Cox, Diane Gilmore, Sandra Hayes, Roy Henry, Harold Hensley, Stephen Howard, Jan Jeffcott and Dian Joines.

Kenna Kincade, Tom Laster, Sara Mansfield, Victor Matthews, Marilyn McElwee, Connie Neil, Pamela Perkins, Harvey Pratt, Ann Robert, Sue Rataczak, Sarah Robertson, Martha Scott, Allen Showalter, Mary Tate, Doris Verbryck, Louis Williams and Kathy Wright.

Initiation ceremonies were conducted by Linda Colon, president of Phi Theta Kappa; Jackie Oakes, vice president; and Susan Conrow, secretary. Dr. Charles Niess, chairman

of the education and psychology division, spoke to the members on "You and Your Challenge."

Ann Buehner, soloist, and Lucille Mermoud, accompanist, performed the Phi Theta Kappa song. Dr. Edward Phinney, dean of the College, gave congratulatory remarks to the new members.

Phi Theta Kappa is a national scholastic fraternity for junior colleges. To be eligible for the organization, a student must hold an accumulative grade point average of 3.5 at the end of his first college semester; a 3.4 g.p.a. after the second semester; 3.3 after the third college semester; and 3.2 after the fourth and final junior college semester.

The 31 additional members bring the total membership for the MSC Eta Chi chapter to 65. Mrs. Grace Mitchell and Larry Martin are sponsors for the organization.

Drama Dept. to Present Summer Theatre 'First'

The MSC drama department will make another "first" this year, inaugurating a summer Theatre program at the Barn Theatre. The summer program will be comprised of a morning class in drama and the presentation of two complete productions in the tradition of summer stock.

The drama class will be held daily during the summer school morning sessions. Students enrolled in the class will receive six hours of college credit. Enrollment for the class will be June 2 with class to begin on June 3.

The morning classes will concentrate on acting and theatre production. In the acting portion of the summer session, students will study voice, diction, mime and modern dance, and movement. Theatre production will include problems and techniques in staging, make-up, theatre laboratory, business manage-

ment and all aspects of theatre.

Students enrolled in the Summer Theatre production course, listed as Drama 201 in the catalog, will become members of the resident acting company and be eligible for the plays.

Tryout dates for the two productions will be June 3-4. Tryouts are not limited to MSC students, and area residents as well as faculty members may participate. Interest in the summer production already has been expressed by persons from Miami, Oklahoma, and Ashgrove, near Springfield, Missouri.

The first production will run July 7-16, excluding Sunday. Director Milton Brietzke has not selected the play as of yet, but Tennessee William's "Summer and Smoke" is currently foremost on the list. Other possibilities include "The Rope Dancers," "The

(Continued on Page 2)

Scholarship Application Will Close the Fifteenth

Saturday, April 15, is the last day for scholarship and loan applications to be accepted in Room 305 of Hearnest Hall. A number of scholarships are available to qualified MSC students.

Scholarship donors include service organizations, interested individuals, local civic groups and business organizations. Amounts of scholarships vary from \$50 to \$500.

Several awards are offered to students demonstrating high potential in basketball, football, music and dramatics. Student assistantships are offered by the Crossroads, the Chart, and the education department. The four student loans that are available are the National Defense Student Loan, guaranteed loans from a bank or other financial in-

stitutions, educational opportunity grants for students with exceptional financial need and small, short term loans.

MSC also sponsors a student employment program which aids students needing jobs during the school year. Students may work a 15-hour week during the time they are attending classes and often a 40-hour week during vacations.

The Federal Work-Study Program primarily assists students from low income families. Under this program, students may be employed by the College or by certain other nonprofit agencies.

All applications must be on file of the Financial Aids office in Hearnest Hall by April 15.



Stanley Graham, Judy Ardrey, Joe Napier, Karen Porpoth and Jere Marcum will be soloists at the MSC Chorale-Community Symphony's production of Haydn's "Creation." The production will be presented at 3 p.m., Sunday afternoon, April 13, in the South Junior High School auditorium. Admission will be \$1.50 at the door, but MSC students will be admitted upon presentation of activity cards.

The Chart

The Chart, the official student newspaper of Missouri Southern College, Joplin, Missouri, 64801, publishes 18 issues during the school year. It is a member of the Missouri College Newspaper Association.

Editor Kathleen Bagby
 Feature Editor Carol Rusaw
 Office Manager Diantha Thompson
 Sports Editor Jim Moss
 Reporters Colleen Edwards,
 Gloria Pedersen, Dick Smothers, Patty Goddard, Dan Kelly, Bob Basye, Dave Englert, Larry White, Cathy Smith, Lola Smith, Hoop Morgan, Vera Stotts, Joe Kodba, Roy DeMerice, Sandy Shaw, Harold Davis, Mike Hohertz, Shelby Regan, E. J. Murray, Peggy Chew.
 Advertising Manager Diana Simpson
 Circulation Dick Perkins

Spiva Center Spotlights Two Joplin-born Artists

Two shows containing approximately 130 works opened April 1, at the Spiva Art Center.

Joplin-born contemporary artist Stanley Lea is currently exhibiting one hundred works, including drawings, watercolors, acrylics and etchings, at the Center. Lea is the Asso-

ciate Professor of Art at Sam Houston College at Huntsville, Texas. He received his B.F.A. Degree from Kansas State College of Pittsburg and his M.F.A. Degree from the University of Arkansas at Fayetteville. He is visiting professor at the Museum of Fine Arts in Houston. Five outstanding galleries located in Dallas, Houston, Hollywood and Lake Side, Michigan, display his works.

Lea has won many national awards for his works. He has been represented in three international exhibits, 15 national, 24 regional (3 to 7 state area), 20 local or one state area exhibits, and has had 12 one-man shows. He has won 12 prizes and awards.

Lea is an outstanding artist who loves music. Many of his pictures have musical titles.

Sidney Scorse, Joplin physician-surgeon, will also display his work this month. Dr. Scorse is a local supporter and member of the Center and was instrumental in obtaining it.

Dr. Scorse will display about 30 works in watercolor.

This show is almost twice the size of any other show on display at the Center in the past.

JOTS

Medieval history students are planning a trip to the Nelson Art Gallery in Kansas City in May. Mrs. Julie Hughes, history instructor will accompany the group. The gallery is considered to have one of the finest medieval section of any in the country.

Circle K representatives traveled to Kirksville, March 22-23 for the state annual convention. Roger Pennell and David Richards represented the MSC chapter.

Charles Kirby, vice president of the Student Senate, and Miss Jon' Ann Bieker, an MSC junior were married in Joplin, March 23. The couple will be seniors next fall.

The MSC Art League sponsored an acrylic lecture-demonstration by artist Jay O'Melia, March 27, at the Spiva Art Center.



Director of Placement Fred Cinotto was given a surprise birthday party, March 21, by cafeteria and office workers. Cinotto was first presented with the small, decorated cake on the left which turned out to be a sponge cake — literally. After an unsuccessful attempt to cut the cake, a second, more edible cake was given to the director. Also seen in this picture are Mrs. Billie Bristow, the school nurse, and Joan Johnson, Mrs. Bristow's secretary.

'Dramatico' To Feature Three Plays

Dramatico '69, featuring student directed one-act plays, will be held April 18, at the Barn Theatre. The program will have an 8 p.m. curtain.

During Dramatico '69, senior drama majors Gary Roney and Stanley Graham will each present one-act plays which they have directed as partial fulfillment of their graduation requirements for degrees in drama. Each director selected the play that he will direct, chose his own cast, planned the set, and performed other directional duties.

Roney's production will be "Absence on Edgemont Street," an original one-act play by MSC instructor Duane Hunt. The play has been performed twice at Springfield and once at the University of Arkansas. The Dramatico performance will mark its first appearance in Joplin.

Graham will produce the one-act drama, "Purgatory," by the Irish poet and playwright William Butler Yeats.

Completing Dramatico '69 will be the first local showing of "The Great Crusade — Or 'Hell No, We Won't Go!'" The one-act play, written by instructors Gwen and Duane Hunt, won rave notices from the critics at the Oral Interpretation Association's Hawthorne Festival at the University of Missouri. The play has been invited to be shown at the Ozark Interpretation Festival, May 1-3 at Springfield.

"The Great Crusade — Or 'Hell, No, We Won't Go!'" depicts the two attitudes surrounding war, while apathy serves as the third attitude. The cast for the play consists of Irma Woodward, Joyce McBroom, Judy Percy, Dick Pierson and Gary Roney. Mrs. Hunt is director for the production.

Tickets for Dramatico '69 will sell for 50 cents. There will be no reserve seats.

Summer Theatre

(Continued from Page 1)

World of Carl Sandburg" and "Beyond the Horizon."

Director Duane Hunt has selected a trilogy of avant garde one-act plays by Eugene Ionesco for the second production. The one-acts, "The Chair," "The Lesson" and "The Leader," will run July 23 through August 1, excluding Sunday.

General tryouts for both shows will be held simultaneously. Persons wishing to try out may read cold from marked material or may bring prepared material.

According to Brietzke, the summer program presents an excellent opportunity for anyone interested in any phase of theatre. The goal of the program is to stimulate interest in the theatre and provide an outlet for area residents who are interested in drama.

A brochure on the Summer Theatre will soon be available on campus.



William Elliott will conduct the Missouri Southern College-Community Symphony and Olivern Sovereign will direct the MSC Chorale for the April 13 production of Haydn's "The Creation." Denise Crosswhite will serve as accompanist.

Pianist Byron Janis To Present Final Concert

The Joplin Community Concert Association will present its final program in the 1968-69 season at 8 p.m., Friday, April 11, at Parkwood High School auditorium in Joplin.

The program features Byron Janis, concert pianist.

MSC students will be admitted upon presentation of activity tickets.

At the age of eight Mr. Janis was brought to New York to perform for the great pianist Josef Lhevinne who recommended that Byron come to New York to study. His piano teachers were Josef and Rosina Lhevinne, Adele Marcus and Vladimir Horowitz. While in New York, he won scholarships at the Columbia Grammar School and

Film Society Will Present 'Hiroshima'

The Spiva Art Center film society will present "Hiroshima Mon Amour," the final film in the 1968-69 series, at 7:30 p.m., Tuesday, April 15, in the gallery of the Fine Arts Building.

A French-Japanese film, "Hiroshima Mon Amour" is the story of a love affair between an impressionable actress and an architect. Alain Resnais directs the film which features French dialog and subtitles.

In the mind of a young woman, memories of her past life in wartime France are fused with her presence in the city destroyed by the first atomic bomb. The past and present are perfectly blended in such a way as to give fresh insights into the depths of human emotions. This is one of the best examples of subjective filmmaking, according to Harrison Kash of the film committee.

Program notes will be furnished. Mrs. Joyce Bowman will lead a discussion following presentation of the film.

Admission for those who do not hold season memberships is 75 cents for students and \$1 for adults.

Persons seeking further information may call MA 3-0183.

took special courses in composition and harmony at the Chatham Square Music School. Under the direction of NBC music director Samuel Chotzinoff. Through Chotzinoff's efforts, Byron, at the age of fifteen, appeared as soloist with the NBC symphony under the direction of Frank Black.

In 1948, after three years of recitals and appearances with orchestras throughout the United States and South America, Janis played his first recital in Carnegie Hall.

Janis made his European debut with the Concertgebouw of Amsterdam with five concerts in 1952. He has since made eight concert tours in Western Europe and four in South America. In 1960 and 1962 he was sent by the state department to play in the Soviet Union as part of the Cultural Exchange Program.

In 1961 the Boston Symphony and Paris' Orchestra De La Conservatoire chose Janis to highlight their celebrations of the 150th anniversary of Liszt's birth.

On his second Soviet tour in 1962, at the invitation of the ministry of culture, he played his first concert as a special gala for the judges and contestants of the second Tchaikowsky competition.

While Janis was in Moscow, Mercury Records made the first American recordings in the Soviet Union with the pianist and the Moscow Philharmonic. These recordings won for Janis the coveted French Grand Prix Du Disque in 1964. In 1965 the French government made the pianist "Chevalier Dans L'orde Des Arts Et Des Lettres."

The next season Janis played some 50 concerts in North America and appeared in South America. In 1967 Janis played 50 concerts in North America including appearances with the Philadelphia, Toronto, Cincinnati, Los Angeles, Montreal, Oklahoma City, and other orchestras. At the Menton Festival he was officially judged biggest box office attraction passing Gillels, Richter and Kempff.

In the spring of 1966 Mr. Janis married Maria Cooper, daughter of the late Gary Cooper. The couple make their home in New York.

Community Concert Series Announces Next Year's Talent

The Joplin Community Concert Association has announced its slate of talent for the 1969-1970 season. Scheduled to appear in Joplin next season are the National Ballet of Washington; the cello-piano team of Johannesen and Nelsova; Metropolitan Opera star William Walker; and the Robert Wagner Chorale.

Phi Theta Kappa is selling faculty memberships to the community concert association, announced Mrs. Grace Mitchell, PTK sponsor. Any faculty member wishing to renew a membership or any new faculty member wishing to join should contact any of the following people by Friday, April 4; Mrs. Mitchell, Larry Martin, Linda Colon, or any PTK member.

As in past seasons, Missouri Southern College purchased a block of tickets from the Association and students will be admitted to the concerts on presentation of College I.D. cards.

The Community Concerts are held at the Joplin Parkwood High School auditorium.

The coming season will be the fifteenth annual concert series sponsored by the Association.

The National Ballet of Washington was originally founded in 1963 as a resident ballet company for the capital city. The company still spends most of its season in Washington although it makes appearances across the nation.

The National Ballet of Washington is directed by Frederic Franklin, a native of England.

The second concert of the season will feature the cello-piano team of Johannesen and Nelsova. Canadian-born Zara Nelsova studied under cellist Pablo Casals and was an established cellist by the age of 18.

The remaining half of this husband and wife team is American pianist, Grant Johannesen. Johannesen began piano lessons at an early age and was preparing for a concert career by his high school years. The famous French pianist offered him a scholarship to study at the St. George School at Newport after hearing him during a high school concert. Since his New York debut in 1944, Johannesen has received many national awards including the Osten International Festival award which he won over entrants from 52 countries.

Baritone William Walker made his debut with the Metropolitan Opera in 1962

with the production of "Madame Butterfly." Since his debut the Fort Worth, Texas, native has appeared in such productions as the "Magic Flute" and "Queen of Spades."

Walker majored in voice at Texas Christian University. He entered the regional auditions in Dallas in 1956 and won the Newberry Award.

The Robert Wagner Chorale has performed throughout Europe, North and South America and the Orient. Founded and directed by Robert Wagner, the Chorale presents contemporary works as well as sacred music and classical masterpieces.

The French-born Wagner came to the United States with his family at an early age. At Los Angeles he joined the St. Brendan's Church choir and became choral director at the young age of 12.

Wagner studied with distinguished French organist Marcel Dupre for five years. He became widely known as a composer and arranger before founding the first Robert Wagner Chorale in 1947.

Engineers Construct Signs As Year's Betterment Project

Each year the Engineer's Club launches a project to better the College. This year construction was completed on the third of three Missouri Southern College signs, this one located at the eastern Newman Road entrance to the campus. The first two are located at the corners of Seventh and Duquesne and at Range Line and Newman Road.

Plans for this sign were laid out during the spring semester of 1968, and approved at that time by both the administration and the architect. During the semester, club members constructed the 4' by 6' metal frame (with seven foot legs) at the Hokanson Tank Company in Carthage after classes. Shortly after the reopening of classes last

fall the lighting fixtures were installed by the Wilhite Sign Company of Webb City. Difficulties delayed its erection until the middle of February by College maintenance personnel.

Plans are now being made for a base to be built around the sign consisting of the same "Carthage Stone" that was used in the buildings on campus.

Officers of the club have expressed special thanks to Dave Hokanson, the Bill Allen Electric Co., Paul McInnis, Jess Reid and Grady Townsend of the Empire District Electric Co., President Leon Billingsly, Dr. Paul Shipman, and the building companies for their aid in the club projects.

HOWSMON'S BOOK STORE

613 MAIN

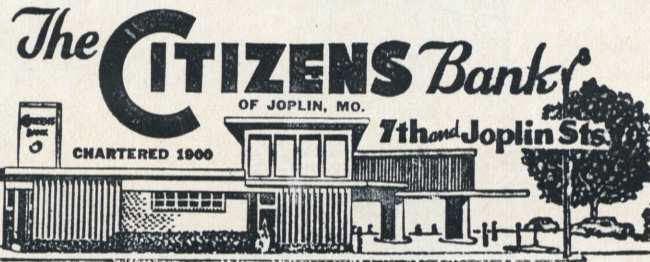
JOPLIN, MO.

MA 3-7232

For the most complete line of School Supplies and Books in the area.

Also:

OFFICE SUPPLIES — ART SUPPLIES
STATIONERY and GIFTS



For a wide variety of your favorite foods — all prepared freshly for you — It's Henry's... home of America's most popular menu.



HENRY'S
Instant Service
DRIVE-IN

1218 West 7th MA 3-4522

HOURS OPEN:

Mon. thru Thur. 10 a.m. to 11 p.m. Fri. and Sat. 10 a.m. to 12 p.m. Sunday 11 a.m. to 11 p.m.

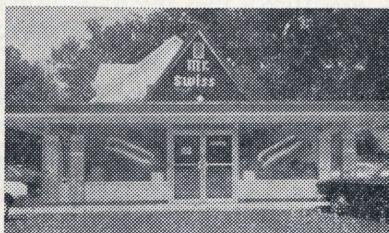


Mr. Swiss

Home of
well-fed
Lions

MR. SWISS NO. 1

635 W. 7th Street
JOPLIN, MISSOURI



CALL IN — DRIVE IN — DINE IN



HERE'S
THE NEW
DATE BAIT
13.00

Such a live-wire dress can build you an entourage of beaus. Love that lime look-like-linen! It's a fashion wrap-up. Scarf's included.

Petite 5-13.

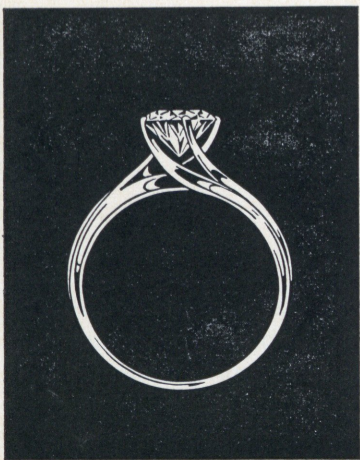
Juniors: second floor

Macy's



Movies · Groups · Weddings
Portraits · Legals · Accidents
Frisco Building—MA 4-6049

Orange Blossom
DIAMOND RINGS



Butterfields

601 MAIN ST. MA 3-5592
FRISCO BUILDING

MSC Education Majors Begin Student-Teaching Assignments

The staff teachers are made of isn't made just in classrooms. It is also made in application. And just last week, the first batch of prospective teachers to be turned out by the Missouri Southern education department began their student teaching assignments in various public schools throughout the Joplin area. But according to Dr. Robert Highland, director of student teaching, it may be out of the pan and into the oven for some student teachers — particularly those who have never taught pupils before. Or those who become nervous when they see some familiar faces of MSC faculty members or administrative staff unexpectedly dropping in to see how things are going.

But student teachers should be well prepared for their assignments. They have spent the first eight weeks of this semester studying such things as the "History and Principles of Education," "Legal and Professional Responsibilities," and "Measurements and Evaluation." These courses, along with the practice teaching, are part of the "Professional Semester" required for a teaching degree. To be eligible for this "Professional Semester," students must have completed other courses in education, including a five-hour structures and observation course. They must also have kept up at least a 2.1 grade average; and they must have been admitted to the teacher education program.

Before a student can practice teach, the education

department checks his qualifications well. And if all requirements are met, then the student is assigned to a "cooperating" school in the Joplin area.

"We try to give the student his choice of where and what grade to teach," noted Dr. Highland. "A student may ask for the second grade, for example, and we try to place him there." "If we can't," Dr. Highland added, "we try to place him in a grade near his choice — say, first or third grades."

Area schools cooperating with MSC are paid \$50 per student teacher, according to Dr. Highland. Student teachers are assigned to elementary or high school teachers, who observe and evaluate them on total effectiveness.

The student teacher's grade for the last half of his "Professional Semester" is based mostly on the observations and opinions of cooperating teachers, Dr. Highland explained. He added that the remainder of the grade for the student teaching is based on the judgments and observations of visiting MSC faculty members in the student's particular field, an education instructor or a member of the College administration.

What effect might one of these unexpected visits have on the student teachers? Dr. Highland takes a dim view. He says, "I don't believe in these unexpected surprises, because a student will perform either better or worse under such conditions."

How does Dr. Highland view this first bevy of student teachers? "I think we have a very well-prepared group," he points out. "So many of them are older married women who have had experience with children. And this is important, I think, in their success as teachers."

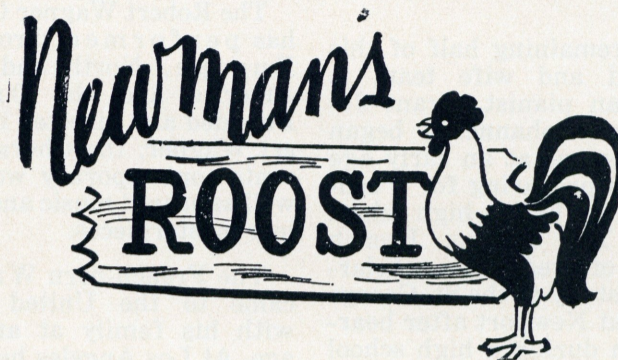
CIRUNA Plans Activities

CIRUNA will sponsor a car wash, Saturday, April 19. Locations for the car wash will be announced at a later date. Tickets will be sold in advance for \$1 per car. Proceeds from the car wash and from the candy sale currently being conducted on campus this month will be used to defray travel expenses to Jefferson City where club members will observe the State Legislature.

CIRUNA is also currently planning an appreciation dinner,

May 2, for all faculty members of the history and political science departments who have given help to the organization.

The organization will schedule club meetings in the evenings until the close of school to allow members who are currently taking part in the student-teaching program to keep active in club affairs. Meeting have been scheduled for April 10 and 24.



shop daily 9:30 'til 5!



Catalina

"oops-a-daisy"

\$ 16

"crazy-daisy"

\$ 12

Shown are just two of Catalina's versions of summer flower power! These are the daisies' way of showing you how much fun you can have this summer on the beach, at the lake or at the pool. On the Left: "Oops-a-daisy" . . . like a field of daisies trimmed with rich black for the top and the pants are of blocks of daisies alternated with black and gold blocks, and you get a matching plastic lined beach bag that takes care of your wet suit! On the Right: "Crazy-Daisy" . . . a bold daisy print on a white background trimmed with a contrasting color. Choice of black or green with yellow and white. Both swimsuits come in sizes 8-14.

Newman's fourth floor swim shop



DANCE
Every Saturday Nite
 9 TO MIDNITE
 Live Music by
The Great Society
 AT THE
ROADHOUSE

Come early and bring a party!

Located 3 Miles West of the Bypass on the Country Club Road.
PITTSBURG, KANSAS

OPEN YOUR PERSONALIZED STUDENT CHECKING ACCOUNT TODAY

FIRST NATIONAL BANK OF JOPLIN
 JOPLIN, MISSOURI

No. _____
 19__ 80-45 1012

PAY TO THE ORDER OF _____ \$ _____

MISSOURI SOUTHERN COLLEGE
MSC
 JOHN Q. PUBLIC

MEMBER FDIC



MSC instructors Jack Jolly and Dr. Orty Orr will attend advanced study institutes this summer.

Dr. Orr, Jolly to Study At Summer Institutes

Dr. Orty Orr and Jack Jolly, have been chosen to participate in advanced study institutes this summer. These institutes are designed to upgrade the quality of college level teaching. Acceptance is on a selective basis.

Dr. Orr, coordinator in the biology department, is participating in a post-doctoral study applying radioisotopes to peaceful, useful purposes. This institute will be conducted at the Argonne National Laboratory in Chicago, June 16 through August 1. The course is designed to present teachers with an opportunity to study and conduct research in this relatively new field, using the

most up to date laboratory equipment. The institute is under the direction of the National Science Institute.

Jolly, an instructor of mathematics, will be attending the University of Wisconsin at Madison, June 23 through August 15. This National Science Foundation program is designed for those teachers who would best apply the offered material in their future classwork. Jolly will be attending classes in abstract algebra (field theory, real analysis), Lebesgue integration and logic and set theory. These courses were specifically chosen for the instructor selected.

MSC Council Gives Approval To Fraternity

The Missouri Southern College Administrative council recently gave its first official approval to Mu Sigma Gamma, an MSC Greek social fraternity.

Officers of the new fraternity include Paul Poyner, president; Bruce Arnce, vice-president; and Brad Osborne, secretary. Tom Gray is social chairman.

The fraternity now has 20 members and will close the charter membership when seven more people join.

To be eligible for membership in Mu Sigma Gamma, a candidate must file a personal data sheet and state his desire to become a member. New members are currently voted on by fraternity members. But after the charter membership has reached 27, the fraternity will admit members by the pledge system.

At its first monthly party a few weeks ago, the social fraternity decided to sponsor Mary Ellen Williams, an MSC sophomore, in the Miss Neosho Contest April 12.

"Music for Everyone"

MUSIC CO.
SALES & SERVICE
BAND & ORCHESTRA INSTRUMENTS
PIANOS & ORGANS — MUSIC & RECORDS

618 MAIN SU 1-1222 JOPLIN, MO.



News in the leisure world. The Golf by London Fog®

Perfect for the man who likes to put and/or putter. The Golf Jacket by London Fog® has swing-easy lushly lined raglan sleeves, elastic waistband, zip-front and slash pockets. Washable Calibre® Cloth (65% Dacron® polyester, 35% cotton) wards off the wind and repels the rain. In a selection of sizes and colors. **22.50**

529 MAIN, JOPLIN
616 N. BROADWAY, PITTSBURG, KAN.

AQUA ART

*Tropical Fish
Aquarium Equipment*

202 South Main
Carl Junction, Mo.
MI 9-7811

hours:
Sat., 10-7
Sun.-Fri., 1-7

Griff's
HAMBURGERS

GRILLED TO PERFECTION,
ON A TOASTED BUN!

20¢

Griff's BURGER BAR

EASTMORELAND PLAZA

Reuben Berry Named Head Football Coach

Reuben Berry, an assistant football coach at Southwest Missouri State College in Springfield, is the new head football coach at Missouri Southern College.

The vacancy was created when Jim Johnson, head grid mentor at MSC, resigned his position on March 17. Johnson piloted the Lions the last two years.

Johnson resigned to accept the defensive coaching position at Drake University in Des Moines, Iowa. Johnson will assist head coach Jack Wallace at Drake. In addition to his defensive coaching duties, Johnson will hold a hand in recruiting prospects from the Chicago area. He left early this week for Des Moines.

During his two-year tenure at MSC, Johnson's Lions compiled a record of 10 losses and nine defeats.

In 1967-68, the Lions rolled to an 8-1 season standard and a national ranking among national junior college powers. Last season, Southern faced its first season in four-year competition and finished with a 2-8 mark, hampered mostly by inexperience.

Following Johnson's resignation, football players here at MSC began circulating petitions calling for the return of Ron Toman as head football coach.

Toman piloted Joplin Junior College elevens for three seasons, preceding Johnson as head coach at Southern. Toman was a grid mentor at Wichita State University the last two years.

Toman's football squads for Joplin Juco compiled an overall record of 24 victories and only five defeats during his three-year stay. In 1965, the Lions posted a perfect 10-0 slate and were ranked third in the nation.

Over 800 Southern students signed the petitions, which were circulated by gridders Jim Muehling, Glenn Wills and Dave Denney, who played

under Toman in 1966. The petitions called for the MSC administration to hire Toman for the head job.

The student body joined the football players in support of Toman. Norris Kelley, assistant coach here, originated the petition idea.

A council was appointed, following Johnson's resignation, for the selection of the new head coach. Included on the committee were Dr. Floyd Belk, Dr. Charles Niess, athletic director Mike Bogard, Miss Venus Young, Dr. Paul Shipman, Dr. Curtis Twenter, Merrill Junkins and students John Prince and Skip Drouin.

A total of five applicants were selected from approximately 15 applicants for screening by the council. The council's selection for the position was presented to Dr. Leon Billingsly for approval and appointment.

The five final candidates included, in addition to Toman and Berry:

Harold Cagle, presently an assistant football coach at

Central Missouri State College in Warrensburg; Gary Watts, head football coach at Columbus, Kansas, High School, and Charles Cowdrey, head football coach at Fort Scott, Kansas, Junior College.

Following interviews of the applicants, the council voted. Two ballots were needed, and Berry was selected. The official announcement was made last Friday by Dr. Billingsly.

Berry brings impressive credentials to Southern. He graduated from Southwest Missouri State College in 1959 and started coaching at Pierce City, Missouri, High School. He then moved to Mount Vernon, Missouri, where he served as high school mentor for three seasons.

Berry then transferred to Fort Scott, Kansas, Junior College, where he stayed for one year, then moving to Sterling, Kansas, in 1964. He joined the SMS staff in 1966 as defensive coordinator.

Berry plans to start spring football drills on April 7, but no definite date has been set as of yet.

Golf, Track Teams Compete Tomorrow

Missouri Southern's golf and track squads will see action tomorrow, as the spring sports season gets into full swing.

Mike Bogard's track contingent will invade Pittsburg, Kansas, tomorrow for the annual Pittsburg Relays. A large field of competitors is expected to be on hand for the event.

The Lion thinclads opened their campaign last Saturday, competing in the 18th annual Arkansas Relays in Fayetteville. Jim Hotts and Jim Car-

ter turned in the best performance for the Lions, but neither athlete could place in the classy field in the university division.

Hoots heaved the shot 50 feet, nine inches, in his specialty, while Carter, a freshman, managed 6-2 in the high jump. Carter just knicked the bar at 6-4.

Bill Harmon, Joe Probert, Bobby Day and Rod Nelson formed Southern's mile and two-mile relay teams. Neither unit placed, but both turned in creditable performances for the first outing of the season.

Doug Landrith's golf team will play host to a quadrangular match tomorrow morning, beginning at 8:30 a.m. Other teams slated to compete in the match, which will be held at Briarbrook Golf and Country Club, include Oral Roberts University of Tulsa, Drury College of Springfield and Southwest Missouri State College of Springfield.

Slated to compete for the MSC links crew are Dave Tourtelot, Steve Carlson, Bill Harris, Frank Jacobs, Scott Everett, Hoot Lawson and Tom Laster.

The golf unit opened competition Wednesday, entertaining Baker University, and journeyed to Pittsburg, Kansas, Thursday for a triangular with Kansas State College of Pittsburg and Washington University of Topeka.



Members of Missouri Southern's track team include, from the left: Top row — Pee Wee Young, trainer; Bill Harmon, sprints and relays; and Leonard Gay, sprints. Bottom row — Bob Waggoner, pole vault; Dale Green, sprints and long jump; Jim Hoots, shot put; and Kenny Hall, sprints and relays.

Greg Potter Fights In National Tourney

Greg Potter, a senior at Missouri Southern, advanced through the quarter-finals of the National Golden Gloves amateur boxing tournament last week in Kansas City.

Potter earned the right to compete in the national event by winning the Joplin Golden Gloves and the regional tournament last month in Kansas City. He defeated Johnny Williams of Kansas City in the regional finals.

Potter, competing in the 125-pound class, posted three consecutive victories in the national tourney before being ousted. He scored decisions over Tom Sperling of Minneapolis, Minnesota, and Tomas Dixon of Washington, D. C., in his first two fights.

In the quarter-finals, Potter defeated Cyril Pelster of Omaha, Nebraska, earning the right to advance to the semifinals.

Potter finally was defeated in the semifinals by James Buscame of Fort Worth, Texas. The two battlers slugged it out all the way, and some of the crowd booed the decision, thinking Potter had won the fight.

Buscame went on to upset defending champion Lorenzo Trujillo in the 125-pound finals. Potter, therefore, would have had a fine shot at the title if he had defeated Buscame.

Potter, after dropping his semifinal decision, was

awarded the Davey Moore sportsmanship trophy. The trophy is presented annually by the Kansas City Golden Gloves Association in the honor of Moore, a one-time Golden Gloves fighter and former world featherweight champion.

1969-70 Football Slate Announced

Mike Bogard, athletic director, has announced a nine-game football schedule for Missouri Southern's Lions for the 1969-1970 season.

A pair of open dates are included on the slate — October 25 and November 1. Both dates may be filled, according to Bogard.

The Lions will open their schedule on September 12, entertaining Northeastern Oklahoma of Tahlequah. Other home dates include Wayne, Nebraska, State, September 27; Arkansas Tech, October 12; Kansas State College of Pittsburg, November 8, and Cameron, Oklahoma, State, November 23.

Four road games appear on the card. They are September 20, Panhandle, Oklahoma, A&M; October 5, State College of Arkansas of Conway; October 18, Northwood Institute of Cedar Hills, Texas, and November 15, Lincoln University of Jefferson City, Missouri.



Head track coach Mike Bogard, far left, poses with members of the MSC track squad, which will compete in the Pittsburg Relays tomorrow. Shown, from the left, are coach Bogard, Bobby Day, Joe Probert and student coach Herb Winslow. Kneeling is Jim Carter.

SCHOOL SUPPLY, INC.

411 MAIN ST. JOPLIN, MO.

MA 4-7575

EVERYTHING FOR THE ATHLETE

- Rawlings
- Riddell

- Spalding
- Wilson